

ExpenseConnect for Microsoft Dynamics AX

What is ExpenseConnect?

SAP Concur adds a lot of value to your organization, but getting data from Concur into Microsoft Dynamics AX is frustrating and time-consuming. You have to export hundreds of data columns and then manually parse and format the data so it can be uploaded into Dynamics AX.

All this manual downloading, manipulating and reuploading of data increases the likelihood of errors.

That's why we've developed ExpenseConnect. A prepackaged cloud-to-cloud integration product, ExpenseConnect uses Dynamics AX Web Services to automatically pull expense reports from Concur Expense and integrate them into Dynamics AX – drastically simplifying and streamlining the process.

How does it work?

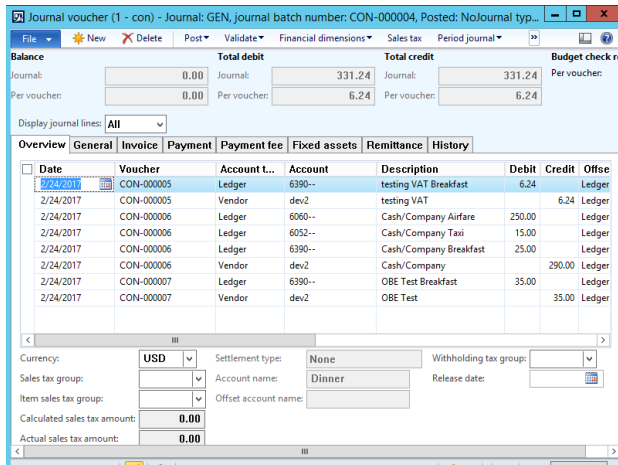
Built to be flexible yet secure, ExpenseConnect allows you to define the data mapping from Concur Expense to Dynamics AX. The mapping functionality is easy to use and doesn't require costly custom development efforts.

Overall, ExpenseConnect eliminates the need for your organization to manually download and manipulate files to integrate data between Concur and Dynamics AX. And better yet, it can easily accommodate:

- Multi-currency transactions
- Multi-company
- The use of corporate cards
- Concur Expense Pay transactions

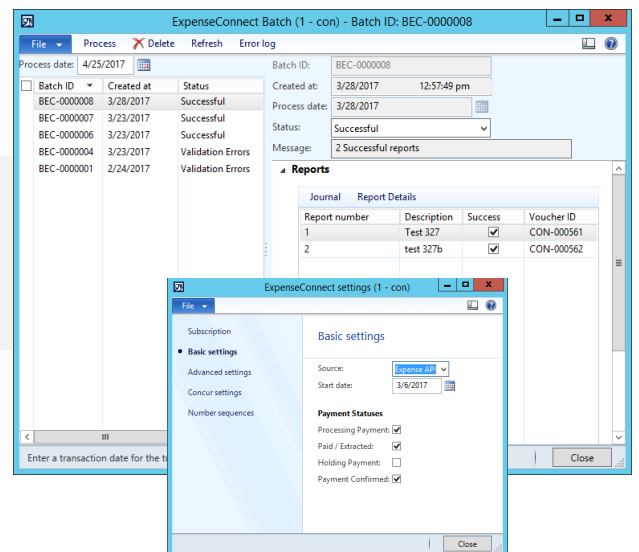
The ultimate Concur integration tool

Because ExpenseConnect is built into the Dynamics AX environment, you don't have to switch between applications and can keep working in AX. Great news, right? Here's a little more info on how ExpenseConnect works:

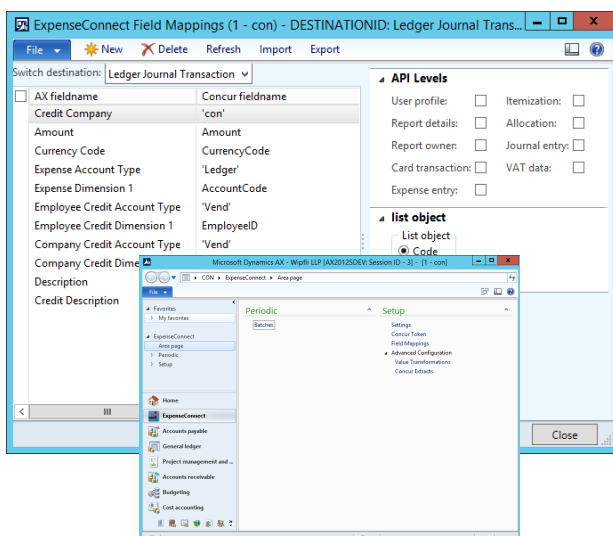


Seamless integration generates the appropriate transactions in Dynamics AX.

View the integration process results and manage the settings.



Easily configure data mapping between the systems.



Let's get started

Contact Wipfli to learn more about ExpenseConnect and view a free demo.

wipfli.com/Concur